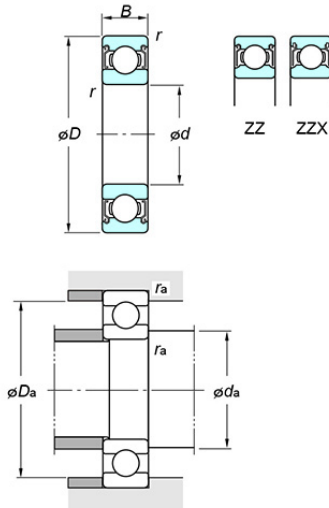


Deep groove ball bearings - Single-row - Shielded/sealed type - Shielded ZZ



Bearing No. 6216 ZZ

Specifications

(Boundary dimensions ...etc)

d(mm)	80
D(mm)	140
B(mm)	26
r(min.)(mm)	2
Basic load ratings : Cr(kN)	90.9
Basic load ratings : C0r(kN)	53.0
Fatigue load limit : Cu(kN)	3.25
factor : f0(l)	14.6
Limiting speeds(Grease lub.)(min-1)	4500
Limiting speeds(Oil lub.)(min-1)	

Mounting dimensions

da(min.)(mm)	89
da(max.)(mm)	93
Da(max.)(mm)	131
ra(max.)(mm)	2

Refer.

(Refer.)Mass(kg)	1.40
------------------	------